



HTTP Application Programming Interface (API)

Version : 1.2

Date : 12 March 2013

©Web 123 Sdn Bhd, 2013 - Confidential and Proprietary

This document is copyrighted. No part of this document may in any form or by any means be reproduced, stored in a retrieval system or transmitted without prior written permission from Web 123 Sdn Bhd



Contents

1. Document History	3
2. Abbreviation	3
3. Introduction	4
4. System Requirement	4
5. API List	
5.1 Send MT message	5
5.2 Check transaction status	7
5.3 Check credit balance	8
5.4 DN URL Transaction status	9
6. Appendix	10

1.0 Document History

Date	Document Version	Document Description / Changes to document
1/8/08	1.0	Document Creation
5/5/09	1.1	Update on error code
12/3/2013	1.2	Update on DN URL Transaction Status

2.0 Abbreviation

Abbreviation	Full Description and explanation
CP	Content Provider – Customers connecting to onewaysms gateway
HTTP	Hyper Text Transport Protocol – Protocol used for CP to communicate with onewaysms gateway
MSISDN	Mobile Station International ISDN number
SMS	Short Messaging Service
MT	Mobile Terminating
MT URL	onewaysms.com.my's sms platform MT URL (URL for Content Provider to interface with onewaysms sms gateway to send out MT)
DN	Delivery Notification. This is the notification from the Telco to indicate the status of the SMS



3.0 Introduction

This document is intended to be used by developers, technical architect, designer who wish to develop applications or connect their platforms to interface with onewaysms's sms gateway through HTTP connectivity.

4.0 System Requirement

1. Content Provider may use any web based programming language that supports HTTP protocol
2. Onewaysms gateway will be listening on port 10001 or port 80

5.0 API List

onewaysms gateway expose 4 API for CP to utilize

1. Send MT message
2. Check transaction status
3. Check credit balance
4. DN URL Transaction status

Guide to integrate with onewaysms gateway

5.1 Send MT message

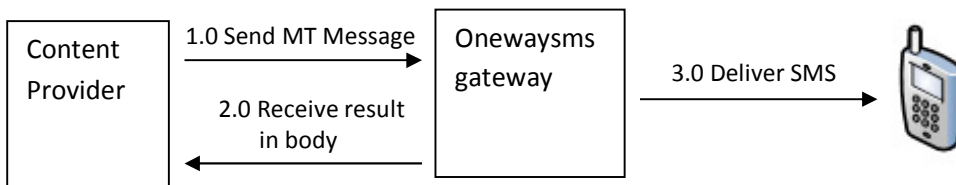


Diagram 1: Send MT Message

To send MT, CP would need to call MT URL with the appended parameter. (MT URL can be obtain from API section in your account)

Below are the HTTP parameter that are required to be appended to MT URL

Parameter Name	Data Format	Description
apiusername	String	Username for your API (can be obtain under API section once you have log into your account) Note : API username is different from your web username)
apipassword	String	Password for your API (can be obtain under API section once you have log into your account) Note : API username is different from your web username)
mobilenos	String	Phone number of recipient. Phone number must include country code. Example : 60121234567 10 mobile numbers can be included in this field separated with commas (,). Eg. 60197654321,60121234567
senderid	String	Refer to sender. Field can take up to 11 alphanumeric characters. Note : Sender ID is no longer relevant in Malaysia.

		You may enter "INFO" as the Sender ID. It will always display as a 5 digit number starting with 6. For example, 6XXXX
language type	String	Indicated the type of sms sent: "1" – Normal Text message (160 characters as 1 MT) "2" – Unicode Text message (70 characters as 1 MT) For language type 2, refer to Appendix 1 for example on conversion
message	String	Content of the SMS. Example, if language type set to 1, and message has content with length 200, 2 SMS will be sent. We can combine SMS. We need 7 characters to combine. Below are the character count 1 SMS = 160 characters 2 SMS = 306 characters (14 characters for joining) 3 SMS = 459 characters (21 characters for joining) We recommend sending up to maximum 3 SMS long

Once onewaysms gateway receives a MT request, it will return a HTTP 200 response to CP

- If the value is other than 200, then it is a failed request.
- If the value is 200, CP is required to extract the message body for the result
- If the result is a negative value, some of the MT parameters are invalid (refer below for details)
- If the result is a positive value, it means our gateway successfully receive it. The result is the MT ID. (If you would like to check on transaction status, you would need to store this ID)

Below are the result that will return on the message body

Result	Description
>0	Positive value – Success If multiple numbers are sent in the same request, result will display multiple MT ID, For example, 200806150001,200806150002
-100	apipassname or apipassword is invalid

-200	senderid parameter is invalid
-300	mobilenos parameter is invalid
-400	language type is invalid
-500	Invalid characters in message
-600	Insufficient credit balance

Refer to Appendix 2 on URL example on sending MT

5.2 Check transaction status (optional to implement)

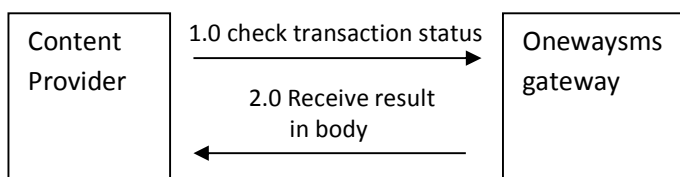


Diagram 2: Check transaction status

Once bulk MT is delivered to subscriber, Content Provider may check transaction status by calling bulk check URL (Bulk check URL can be obtained from API section in your account)

Below are the HTTP parameters that are required to be appended to MT URL

Parameter Name	Data Format	Description
mtid	String	MT ID received from onewaysms gateway when sending MT previously

Below are the results that will return on the message body

Result	Description
0	Success receive on mobile handset
100	Message delivered to Telco
-100	mtid invalid / not found
-200	Message sending fail

Refer to Appendix 3 on URL example on check transaction status

5.3 Check Credit Balance (optional to implement)

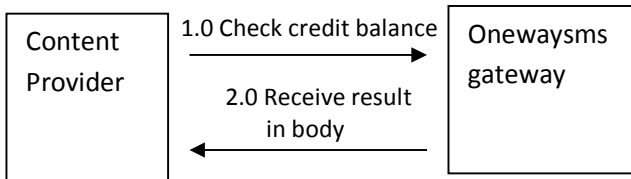


Diagram 3 : Check credit balance

Content Provider can check credit by calling check balance URL . (Check balance URL can be obtain from API section in your account)

Parameter Name	Data Format	Description
apixusername	String	Username for your API (can be obtain under API section once you have log into your account) Note : API username is different from your web username)
apixpassword	String	Password for your API (can be obtain under API section once you have log into your account) Note : API username is different from your web username)

Below are the result that will return on the message body

Result	Description
0 or positive value	SMS Credit balance in your account
-100	apixusername or apixpassword is invalid

Refer to Appendix 4 on URL example on check credit balance

5.4 DN URL Transaction Status (optional to implement)

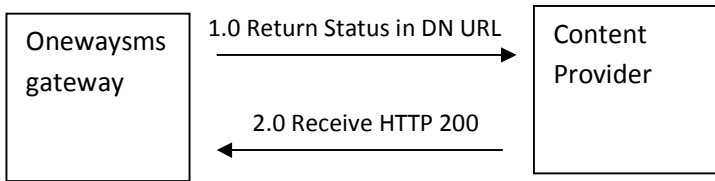


Diagram 4 : DN URL Transaction Status

One Way SMS will update the status of the SMS Transaction by calling Content Provider’s DN URL. (Content Provider can set the DN URL from your own account)

Parameter Name	Data Format	Description
mtid	String	MT ID received from onewaysms gateway when sending MT previously
status	int	1 = success -1 = fail

Refer to Appendix 5 on URL example on check credit balance

6.0 Appendix

Appendix 1

For send with languagetype 2, you would need to convert the message to hexadecimal value

Below are examples on the conversion

Letter “a” : hexadecimal value is 0061

Chinese character “人” : hexadecimal value is 4EBA

Note : each character must be converted to 4 hexadecimal value. Using example “a”, some software will convert to 61, you would need to append “00” to make it “0061”

Appendix 2

Example sending SMS with languagetype 1

<http://mturl?apiusername=123&apipassword=123&mobilenumber=60121234567&senderid=onewaySMS&languagetype=1&message=hello>

Example sending SMS with languagetype 2

<http://mturl?apiusername=123&apipassword=123&mobilenumber=60121234567&senderid=onewaySMS&languagetype=2&message=00680065006C006C006F>

Note : hello converted to hexadecimal is 00680065006C006C006F

Appendix 3

Example calling check transaction status URL

<http://checkstatusurl?mtid=808010000123>

Appendix 4

Example calling check credit balance

<http://checkcrediturl?apiusername=123&apipassword=123>

Appendix 5

Example of DN URL calling

<http://dnurl?mtid=808010000123&status=1>